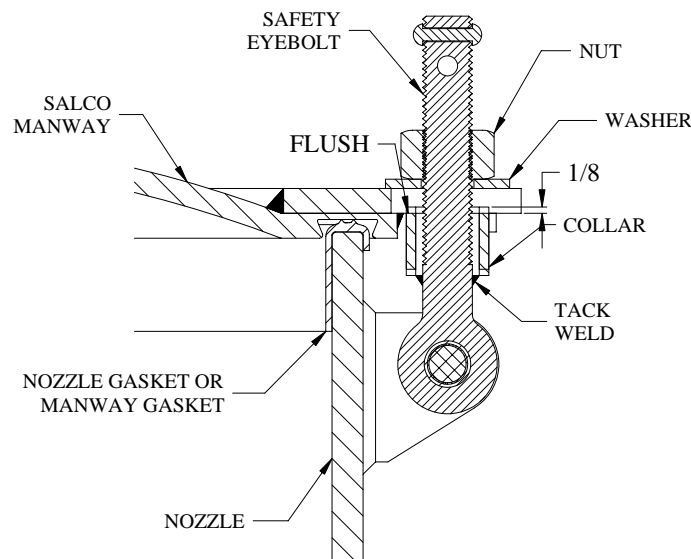




# INSTALLATION INSTRUCTIONS FOR Eyebolts with Safety Collars

These instructions apply to Salco eyebolts with safety collars on Salco manway covers on new applications. The Salco eyebolt assemblies can work on other manway covers in retrofit situations. The cover must have tabs on the underside of the cover and a key hole for the collar. Contact your Salco representative if you are unsure which eyebolt will work as a safety catch on a certain application. Threaded collars are not covered in this set of instructions.

1. Install manway cover with gasket per normal operating procedures.
2. Flip all eyebolts to the closed position. Hand tighten all nuts around the cover. Give each nut at least a turn with a wrench to ensure the cover is stable.
3. Slide the collar up towards the bottom of the manway cover. The top of the collar should be between flush with the bottom of the cover and 1/8" into the cover. Place a small tack weld on the bottom of the collar to the eyebolt.
4. Repeat for the second safety eyebolt, if applicable.
5. Unscrew all of the nuts. The nuts on the safety eyebolt should be unscrewed as far as possible. The safety eyebolts should not fall to the open position until the cover is lifted open.
6. If the safety eyebolts fall to the open position without lifting the cover, the collar must higher up the eyebolt. If the cover cannot be opened, the collar should be lowered.
7. If the safety eyebolts act as intended, apply another tack weld to each collar.
8. Apply cotter pin to the button head rivet, if not done so already.



TIGHTENED VIEW  
FIGURE 1



## SALCO PRODUCTS, INC.

20 W 201 101<sup>st</sup> St., Suite A • Lemont, IL 60439  
(630) 783-2570 Fax (630) 783-2580

22311 Hufsmith-Kohrville • Tomball, TX 77375  
(281) 351-0274 Fax (281) 351-1514