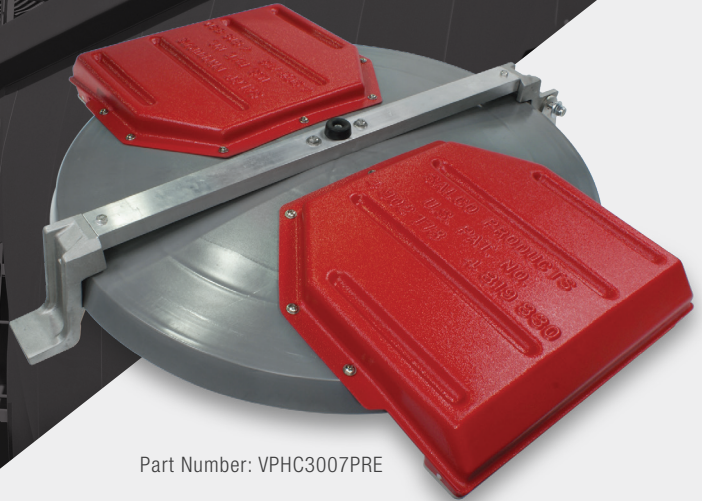


30in Vented Hatch Cover



Part Number: VPHC3007PRE



HOPPER CAR

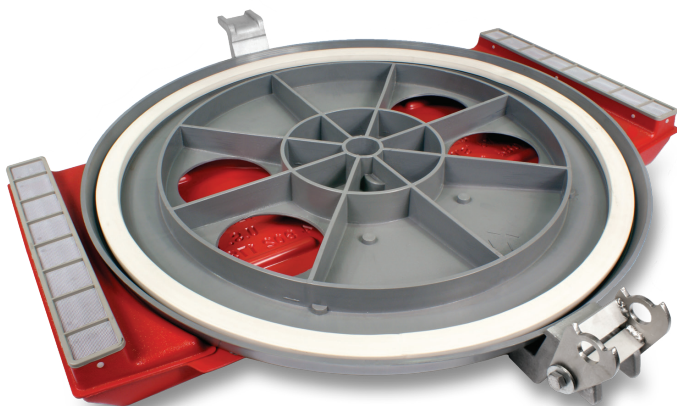
The concept of dual vent hoods to promote the safest and most efficient venting of a railcar has been the cornerstone of the vented hatch cover since its initial design in 1988.

CUSTOMER BENEFITS

- Lightweight but durable HDPE cover with ABS vents
- Seamless and glueless gasket
- Superior seal
- Saves time, labor, and reduces accidents
- Lockable hardware
- Conversion arrangements available
- Eliminates roof implosions

PROVEN RECORD OF PERFORMANCE

As the original designer behind the most risk-free way to vent a hopper car, Stucki takes pride in its vented hatch cover. With millions of our covers in service over the past 20 years, the material quality and flawless design speak for itself.



Seamless and glueless gasket snaps into place



Part numbers referenced are for images shown
View Stucki website for full product offering at:
www.stucki.com ►