



# SALCO PRODUCTS, INC.

20 W 201 101<sup>st</sup> St., Suite A • Lemont, IL 60439  
(630) 783-2570 Fax (630) 783-2580

22311 Hufsmith-Kohrville • Tomball, TX 77375  
(281) 351-0274 Fax (281) 351-1514

## QUICK GAUGE DEVICE (QGD 1000) INSTALLATION INSTRUCTIONS

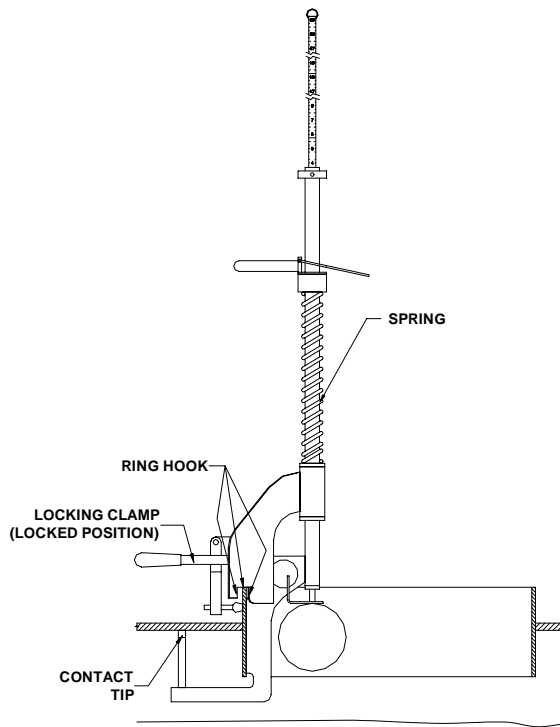


FIGURE 1

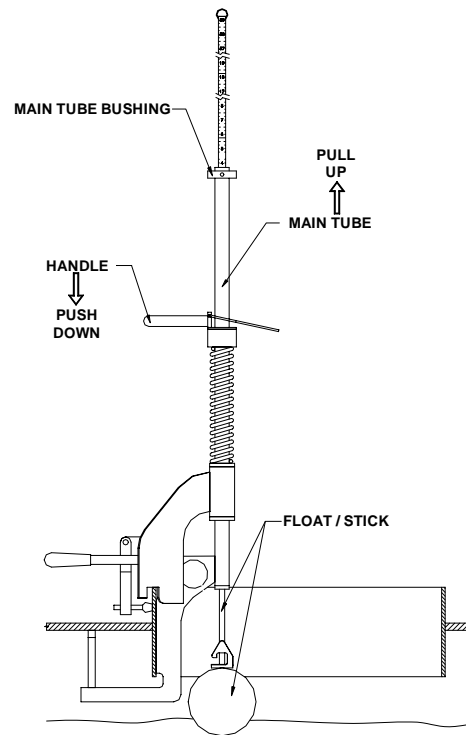


FIGURE 2

- 1) The Quick Gauge should be installed on the ring so that the handle is pointing toward one of the ends of the tank car.
- 2) See Figure 1. Begin installation with the manway cover open, the Quick Gauge spring uncompressed, and the locking clamp in the unlocked position.
- 3) Slide the body of the unit into the opening on the tank car and rest the ring hook over the ring. The contact tip should be below the inside of the tank shell.
- 4) Lock down the locking clamp to secure.
- 5) See Figure 2. With one hand grasping the main tube and the other hand on the handle, pull up on the main tube until the contact tip comes in contact with the underside of the tank shell. At the same time, push down on the handle to compress the spring. This secures the contact tip to the underside of the shell.
- 6) To begin measuring liquid outage level, release the float/stick from its resting position by turning the stick and unhooking the float from the housing. Lower the float into the commodity.
- 7) Read liquid outage level in tank at main tube bushing.
- 8) Store the Quick Gauge out of the tank car with the float hooked on the housing.