



## INSTALLATION INSTRUCTIONS FOR LIFT ASSIST - LASR30TR01 (HOUSING DOME COVER)

**GENERAL NOTE:** - ALL SHARP EDGES TO BE DEBURRED.

Upon receiving the lift assist kit (spring, eyebolts, bushings, fasteners) inspect to make sure it has not been damaged in shipment and that all items listed in drawing BOM are present and accounted for (see drawing LASR30TR01).

1. Remove existing hinge pin assembly (see Fig. 1).
2. Locate and drill a 5/8" hole into the housing. Bottom spring arm needs to line up straight and parallel to the ground (see Fig. 2). Loosely apply the LASR30TR01 kit to housing hinge assembly (see Fig. 2 and Fig. 3).

**NOTE:** Top lock nuts are always threaded with its indented flat side facing away from the bolt (see Fig. 5). Make sure to apply a small amount of lube (grease, machine oil, etc.) onto bolt threading prior to top lock nut application.

Fig. 1

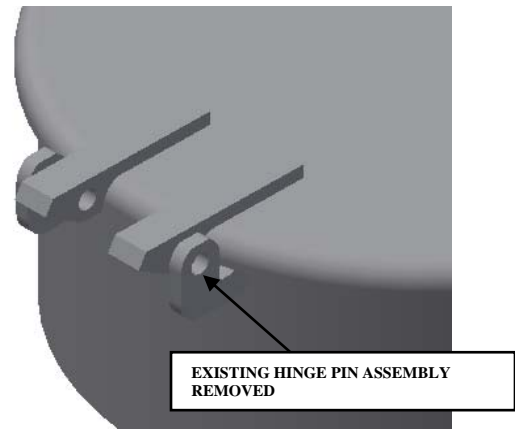


Fig. 2

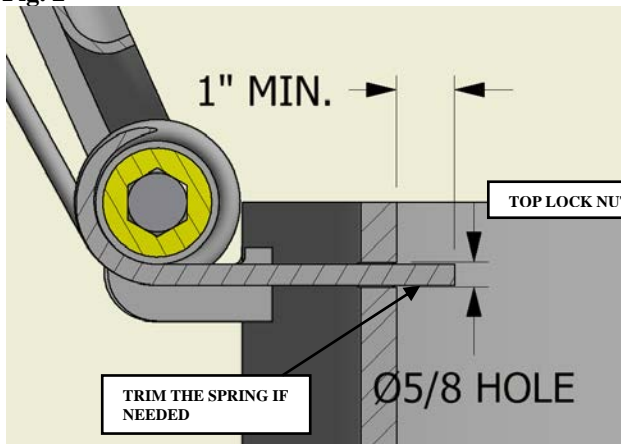
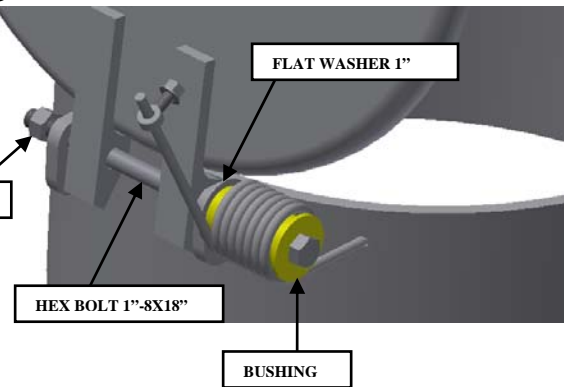


Fig. 3



1385 101st St., Suite A Lemont, IL 60439  
ph (630) 783-2570 Fax (630) 783-2590

22311 Hufsmith-Kohrville Rd. Tomball, TX 77375  
ph (281) 351-0274 Fax (281) 351-1514



3. Drill 5/8" hole into housing cover and secure top arm of the spring to the housing cover with a 5/8" eyebolt, 5/8" flat washer and 5/8" top lock nut (see Fig. 4). Tighten all the top lock nuts.

Fig. 4

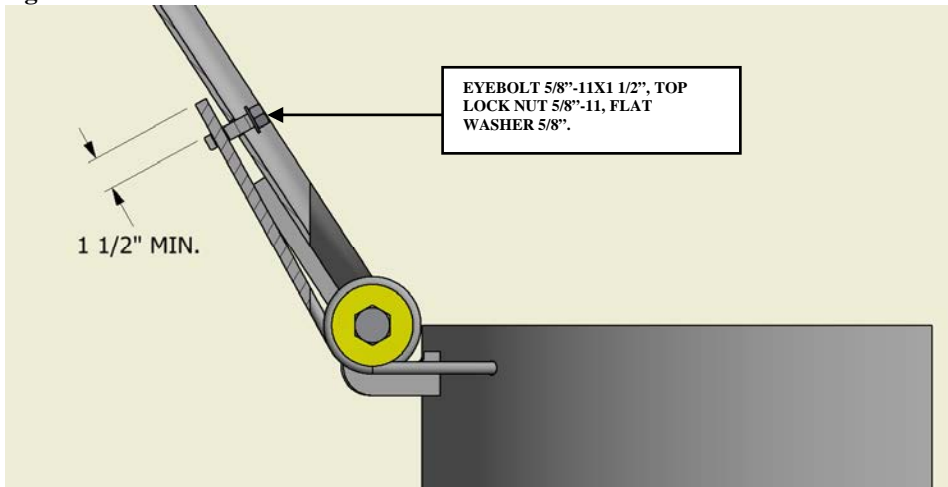
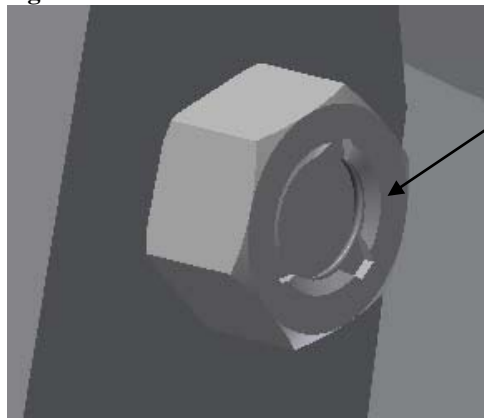


Fig. 5



TOP LOCK NUT FLAT SIDE  
WITH THREE INDENTATIONS

**WARNING: TO DISARM THE LIFT ASSIST SPRING, UNFASTEN AND REMOVE THE EYEBOLT FROM THE COVER WHILE KEEPING THE COVER IN VERTICAL, OPEN POSITION.**



1385 101st St., Suite A Lemont, IL 60439  
ph (630) 783-2570 Fax (630) 783-2590

22311 Hufsmith-Kohrville Rd. Tomball, TX 77375  
ph (281) 351-0274 Fax (281) 351-1514