



CUSTOMER ASSEMBLY INSTRUCTIONS FOR ARI 5236 VENTED OUTLET CAP

TOOLS REQUIRED

3/8" box wrench
9/16" box wrench
Ratchet
9/16" socket
Phillips screwdriver
Wire cutters
Needle nose pliers
Thread locking fluid (Loctite #263)
Bolt cutters

REMOVAL



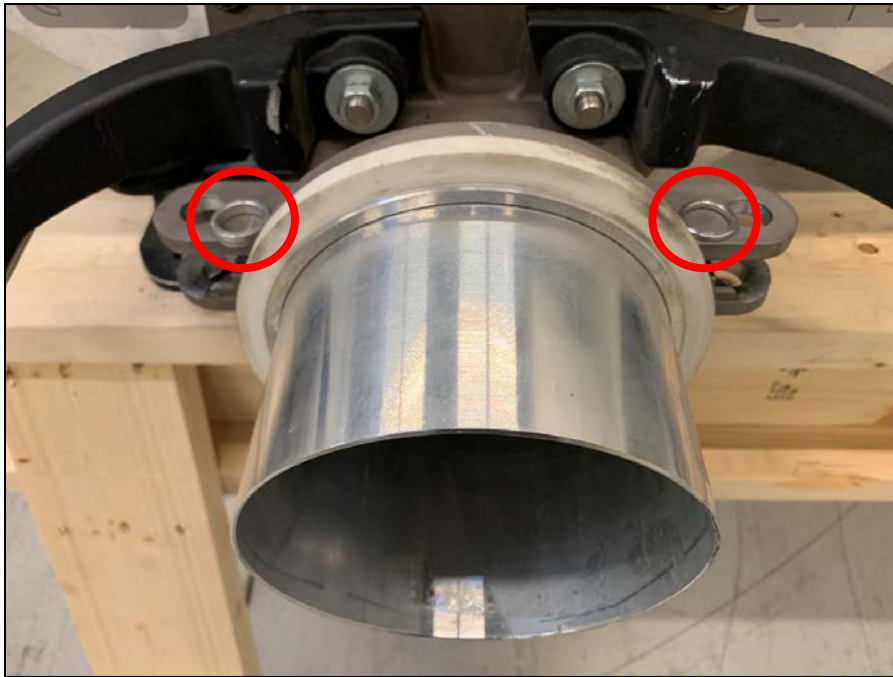
- 1) Remove the repair link or split ring that is attaching the chain to the cap retainer using bolt cutters.



- 2) Loosen the two lock arms and swing them to the side. Remove the outlet cap.



- 3) Unscrew both lock arms completely. Remove them and the L bolts from the gate. Retain the spacers and note which side of the outlet end adapter that they came from. If the L bolts are retained with a cotter pin, use needle nose pliers to remove them.



- 4) Remove the bottom and center bolts on the right side of the outlet end adapter using a 9/16" socket and wrench.



INSTALLATION

- 1) Using a 3/8" wrench and Phillips screwdriver, attach the SS spring bracket to the handle bracket using the supplied screws and lock nuts. Do not fully tighten the fasteners. The bracket should be able to move for now.



- 2) With the right side handle in the open position, secure the assembled bracket to the outlet end adapter using the supplied 3/8" bolts and washers on the front side and washers and nuts on the back side. Use a 9/16" socket and wrench to tighten the fasteners tool tight.



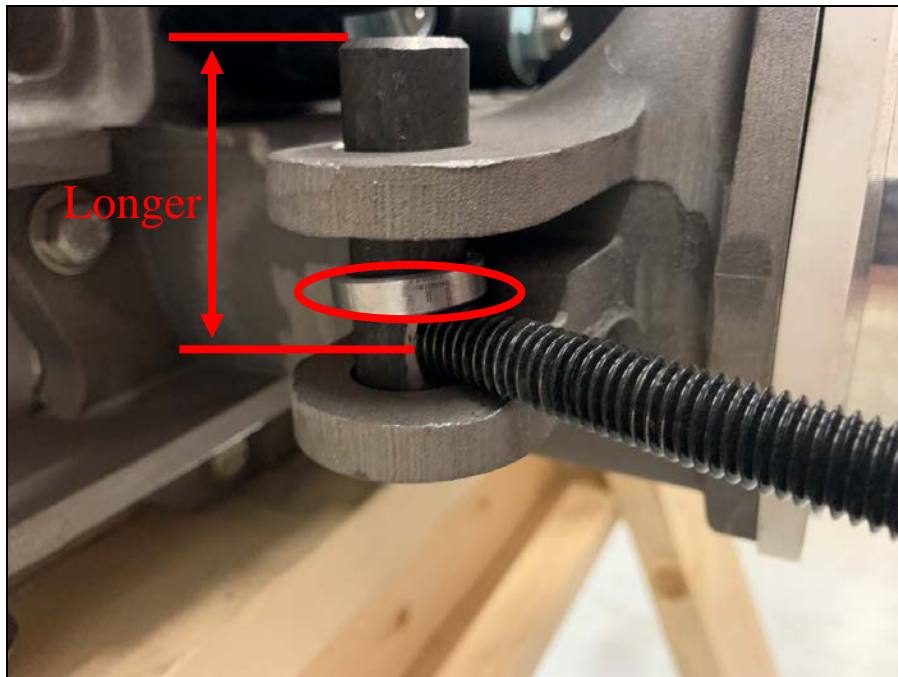
- 3) With the right side handle now in the closed position, slide the spring bracket against the back side of the handle. Secure the fasteners with a Phillips screwdriver and 3/8" wrench tool tight.



- 4) Install one of the supplied pins through the holes in the ears of the outlet end adapter, as well as the spacer that was removed earlier. Note that the longer length of the pin with regards to the threaded hole should be going up. Thread one of the previously removed lock arms into the hole of the pin. The spacer should be on top of the lock arm, as shown in the second photo.



- 5) Install the remaining pin and lock arm into the ears of the outlet end adapter on the other side, as well as the spacer that was removed earlier. Note that the orientation of the pin should be the same as the step above. The spacer should be on top of the lock arm, as shown in the second photo.



- 6) Install the new vented outlet cap and secure it with the lock arms.



- 7) Reattach the chain to the cap retainer using the supplied threaded quick link. Apply 2-3 drops of thread locking fluid (Loctite #263) to the threads. Use a 3/8" wrench to secure tool tight.



- 8) Repeat the removal and installation process on the opposite side of the gate.
Apply the supplied decals to the side of the hopper car above the vented outlet cap on both ends of the gate. Be sure to clean the surface prior to application.

