



MAINTENANCE INSTRUCTIONS FOR EDUCTION TUBES IN SODIUM CHLORITE SERVICE

Scope

The purpose of this document is to outline some general guidelines when inspecting eduction tubes in sodium chlorite service.

Recommendations

1. When inspecting the eduction tube, make sure to remove the entire tube from the tank car. Eduction tube may be discolored compared to new tube.
2. Inspect eduction tube's length for excessive bowing.
3. Inspect a two inch area of the tube beneath the flange for stress cracks and chemical attack (area shown in FIGURE 1). Chemical attack will present itself as excessive whitening.
4. If stress cracks are visually present in inner or outer diameter of tube, immediate replacement is recommended.

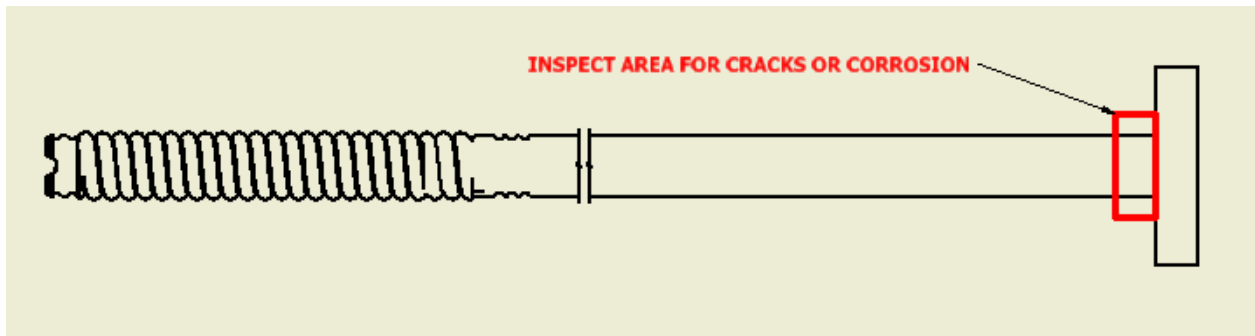


FIGURE 1: INSPECTION AREA

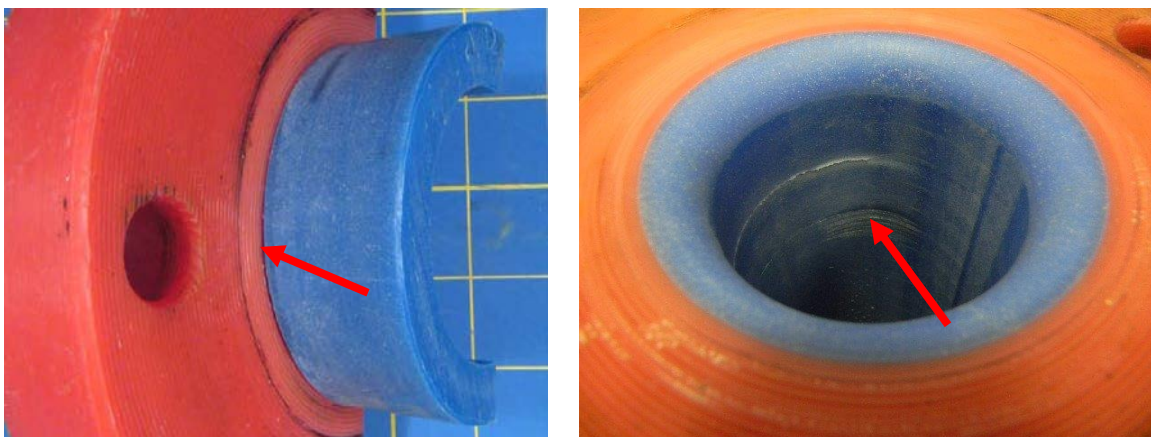


FIGURE 2: STRESS CRACK EXAMPLES