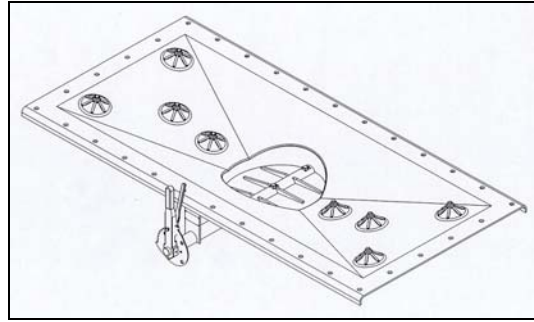


Salco Products

BVG 110 to BVG 2000A gate handle notch plate installation guide



1. Remove the nuts and bolts from the valve in the gate.
2. Remove the shaft and valve from the gate.
3. The notch plate on the gate needs to be removed. (A cutoff wheel makes removing the old notch plate much easier than bending the tabs.) see fig 1.
4. Straighten the back plate if it was bent in the removal of the notch plate. This plate will need to be flat to obtain a good fitup with the new handle assembly.
5. Slide the new notch plate over the valve shaft (countersink holes pointing outward) and install the new handle assembly in the gate, rotate the handle to the closed position. (Make sure the handle is pointing upward) see fig 2.
6. Using (2) c-clamps, rotate the notch plate into the closed position and tighten the clamps. See fig 3.
7. Rotate the handle to the open position, if there is any binding or the handle does not disengage properly associated with the notch plate, loosen the c-clamps and readjust the notch plate. Repeat as necessary.
8. When notch plate has been positioned correctly the handle will rotate without any binding and the handle release will lock into any position. Transfer the hole location of the notch plate to the back plate using a permanent marker.
9. Using ¼" drill bit, drill (4) holes in the back plate using the marked holes from step 9.
10. Install the (4) screws and lock nuts and tighten down.

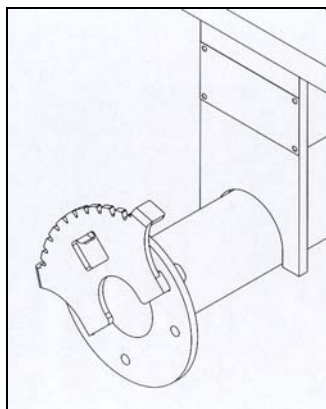


Figure 1.

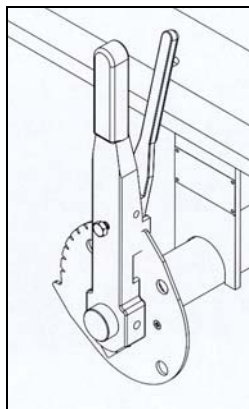


Figure 2.

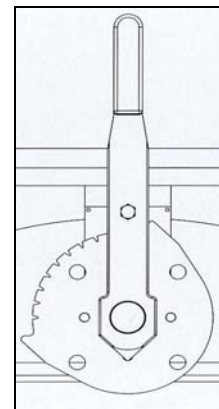


Figure 3.