



# MAINTENANCE INSTRUCTIONS FOR BVG OUTLET GATE - SHAFT REMOVAL AND CLEANING

## Scope

Through normal use of the BVG style outlet gate, product may become trapped and build up behind the operating shaft. Product buildup makes it difficult for the valve to fully close. The buildup of product causes the valve flapper to move off center and can lead to interference and difficulty closing the valve.

## Tools Needed

- Pair of 13/16" sockets and/or wrenches
- Metal pick tool
- Hammer
- Flashlight
- Permanent marker

## Disassembly and Cleaning Procedure

1. The hopper compartment you will be working on must be empty.
2. Unlatch and swing the valve cover (Item 17) out of the way.
3. Using the marker, draw a line across the flapper edge to valve body ID to help with orientation during reassembly later.
4. Unlock and rotate the valve handle (Item 9) to the full open position to allow access to the three sets of bolts/nuts securing the valve flapper to the valve shaft.
5. Use the 13/16" tools to remove the nuts.
6. Use the hammer to tap the bolts out
7. The valve shaft and handle can now be pulled out as one assembly. Be sure to have an assistant to help support the flapper while the shaft is pulled out to prevent any damage.
8. With the flapper and shaft removed, use a flashlight to look into the center tube of the valve body. See the red circle in Figure 1 for the location you will be inspecting. If present, a buildup of white product should be visible in the blind shaft support boss (See Figure 2).
9. Use a metal pick to clean out the residue. The surface should be bare metal once all buildup is removed.

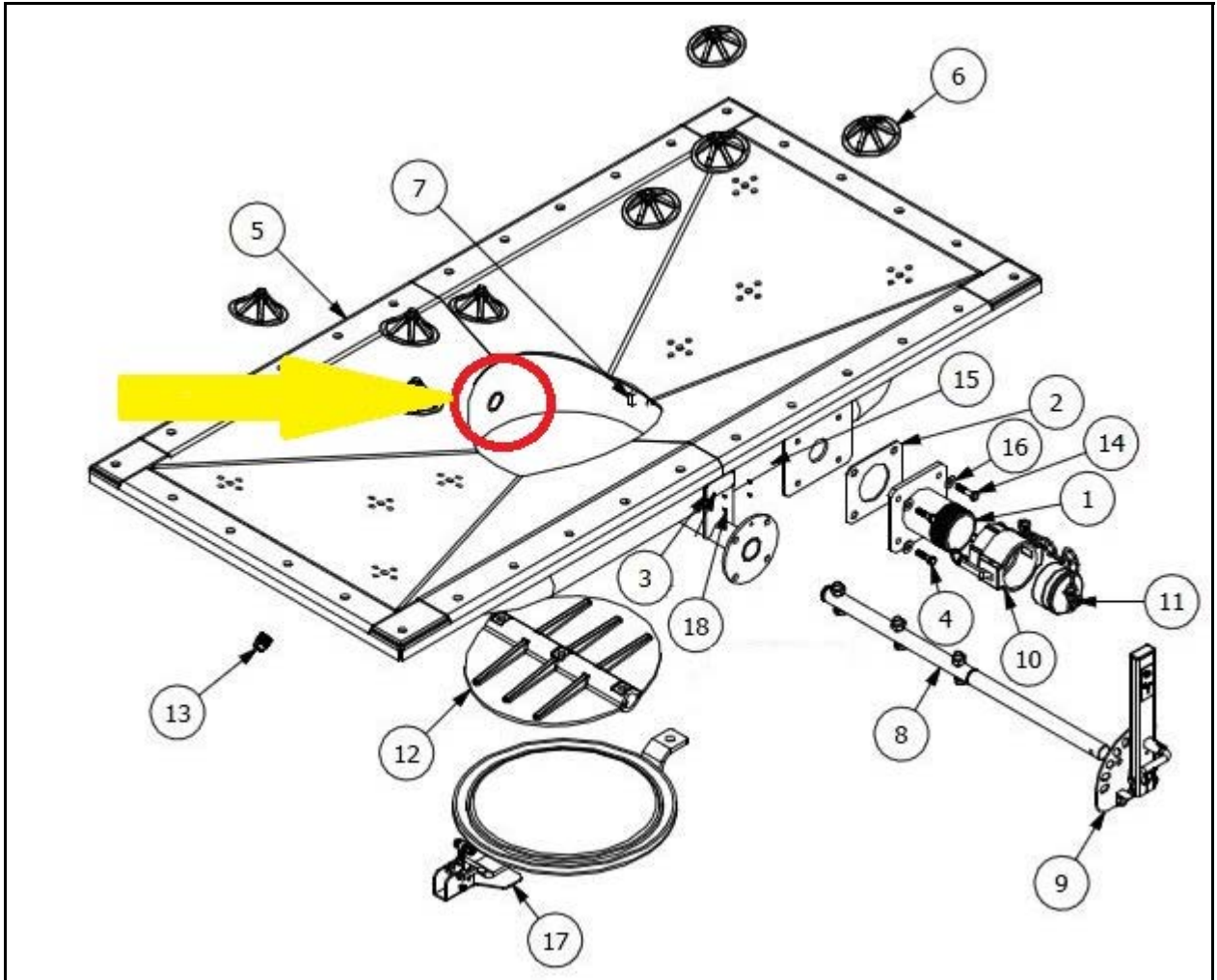
## Assembly Procedure

1. While supporting the valve flapper (Item 12) in the gate center tube, slide the valve shaft and operating handle assembly into the gate and valve flapper. Verify the o-ring on the shaft is intact and remains in place.
2. The valve flapper and shaft may need to be rotated to align the bolt holes in each. Verify the indicator marks you made are in alignment.
3. Place a bolt in each hole, followed by the nuts. It is recommended to start with the center hole followed by the two outer holes.
4. Tighten the three fasteners to tool tight.



**SALCO PRODUCTS, INC.**

5. The valve can be tested and should operate freely.
6. Close and latch the valve cover.



**Figure 1.** – BVG exploded view



**Figure 2.** - Product buildup in shaft support boss