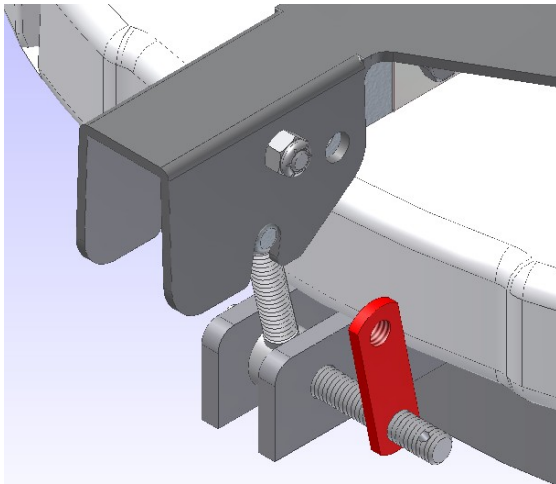
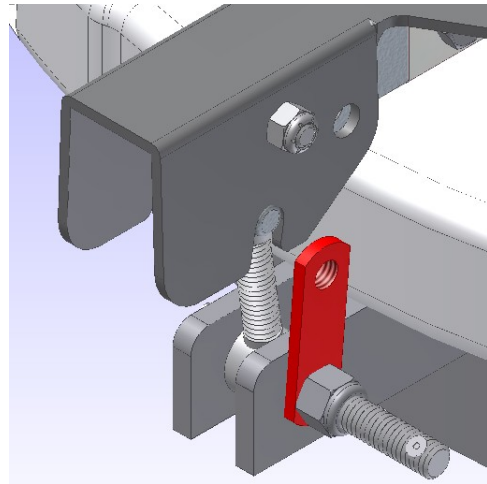


## INSTALLATION INSTRUCTIONS FOR 20" HATCH COVER SECURITY HARDWARE

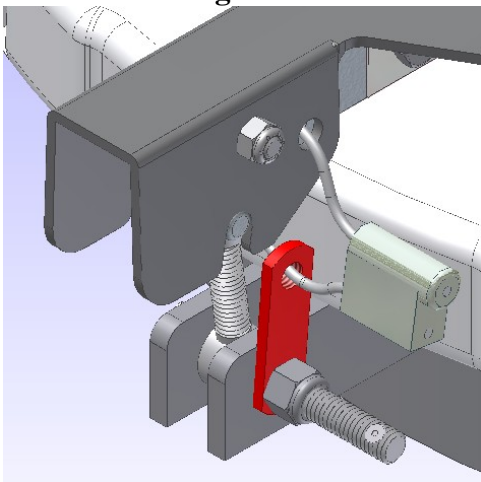
1. Remove existing foot latch bolt and nut.
2. Insert new hex bolt with rivet hole through latch tabs and eyebolt.
3. Thread the red dual tapped weld nut on to the bolt with the raised side of the weld nut facing toward the latch bracket. The raised area will go into the bolt hole on car's latch tab. Position the weld nut as vertically as possible. See Figure 1.
4. Apply nylon insert lock nut and tighten.
5. Using the appropriate rivet gun, apply pop rivet to the hole in the end of the bolt. See Figure 2.
6. Loop the cable seal through both seal holes in the latch and through the weld nut. See Figure 3. Secure the cable seal and pull as tight as possible.
7. On the hinge end of the arm, remove the hinge bolt and nut.
8. Insert the new hex bolt through both hinge brackets and the hinge casting and apply the locknut.
9. Using the appropriate rivet gun, apply pop rivet to the hole in the end of the bolt. See Figure 4.



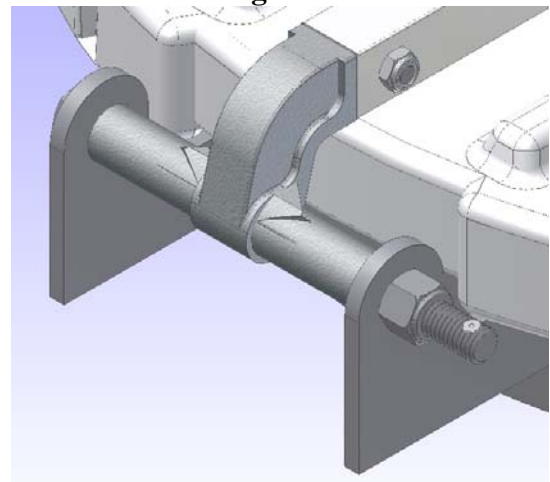
**Figure 1**



**Figure 2**



**Figure 3**



**Figure 4**