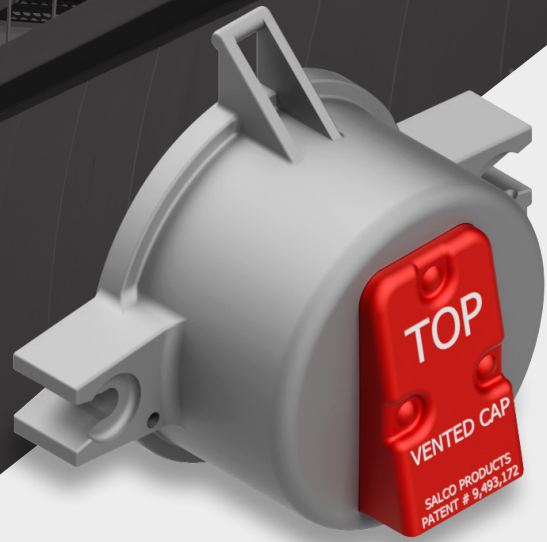


# 6-Inch Vented Outlet Cap



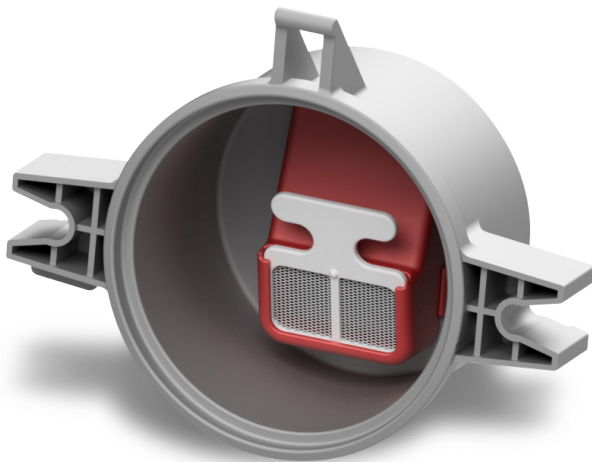
**6" Vented Outlet Cap**

Part Number: RP205KIT35



HOPPER CAR

The 6-Inch Vented Outlet Cap enhances safety, efficiency, and product protection during unloading. Its vented design prevents pellet loss, reduces moisture buildup, and maintains airflow with a 30-micron filter for optimal performance.



\*Image shown reflects ACF 5135 style outlet cap. Additional configurations available for all OEM gate manufacturers and models.

## CUSTOMER BENEFITS

- Prevents pellet loss; reducing risk of fines.
- Improves operator safety; lowering risk of accidents.
- Saves time during unloading process.
- 30 micron filter keeps debris out; lets air in.
- Aids in preventing moisture build-up in draft tube.
- Vent hood directs airflow, enhancing unloading vacuum rate.

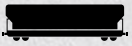
## PURPOSE-BUILT APPROACH

The Salco Vented Outlet Cap, a product brand of A. Stucki Company, delivers key advantages for pneumatic gate operators and car owners alike. Designed in alignment with Operation Clean Sweep® initiatives, this component prioritizes both environmental responsibility and operator safety. Its vented design removes the need for unloaders to crawl beneath railcars, reducing the risk of injury and preventing costly pellet loss.



Official Supporter of

[www.opcleansweep.org](http://www.opcleansweep.org)



### DESIGN FEATURES

- Near side far side standard operation can remain consistent. Vented Caps design features hardware that bolts on to existing outlet gate structure simply and easily.
- A 30 micron filter frame and fabric is replaceable. The filter audibly clicks into place easily indicating proper installation. All testing was completed with common 1450 cfm bulk pneumatic trailer blowers.
- Cap allows venting of the outlet tube both at rest and during transit, aiding in the evaporation of any moisture buildup.
- Hardware kits available for each model of outlet gate.
- Helps eliminate environmental waste and site litter by requiring less components for safe and efficient unloading.
- Installed caps are easily identifiable through incorporated red hood as well as labels applied on the outlet gate side sill.
- The vented outlet cap features enhanced sealing chevrons improving the seal on the outlet gate nozzle gasket.



\* Improves operator safety; lowering risk of accidents



\* Prevents pellet loss; reducing risk of fines

## PRODUCT SPECIFICATIONS

Cap Material	ABS / Polyethylene
Gasket Material	White FDA TPV
Weight	2 lbs
Size	6 in
Hardware Material	Various
Filter Material	ABS Frame, 30-Micron Polyethylene Mesh Filter
Fits Gate Manufacturers	ACF, Thrall/Edsco, Ellcon, Pullman, YSD
Patent Number	9,493,172