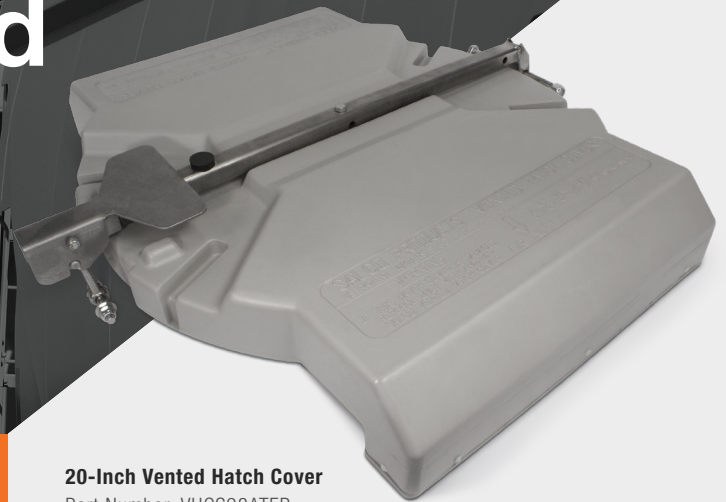


20 Inch Vented Hatch Cover



HOPPER CAR



20-Inch Vented Hatch Cover

Part Number: VHCS98ATEB

The concept of dual vent hoods to promote the safest and most efficient venting of a railcar has been the cornerstone of the vented hatch cover since its initial design in 1988.

FEATURES & BENEFITS

- Lightweight HDPE.
- Seamless and glueless gasket.
- Superior seal.
- Saves time, labor, and reduces accidents.
- Lockable hardware.
- Conversion arrangements available.
- Eliminates roof implosions.

PROVEN RECORD OF PERFORMANCE

As a brand of A. Stucki Company, Salco is the original designer behind the most proven and risk-free way to vent a hopper car. With millions of vented hatch covers in service over the past 20 years, the quality of our materials and precision of our design speak for themselves.

Offering conversion arrangements for every major car manufacturer, Salco delivers reliable solutions for both vented and non-vented hatch cover needs.

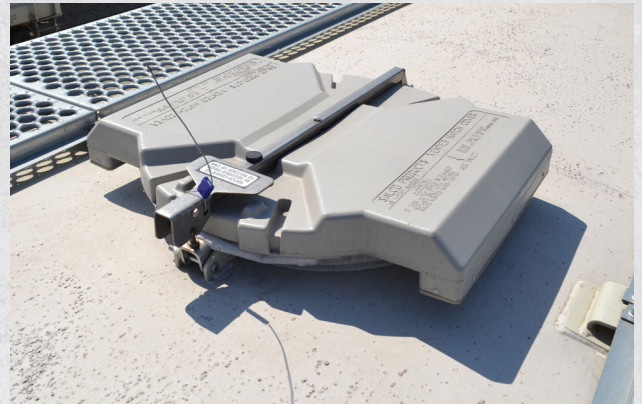
See back side for technical specs ►





DESIGN FEATURES

- UV stabilized material is effective in all climates and weather conditions. Durable, high impact design provides maximum protection.
- Wide seamless and glueless gasket creates a superior seal.
- A full half-inch deflection on the gasket provides a uniform seal around the circumference of the hatch cover. Securment of arm assembly is designed to distribute pressure uniformly.
- Hardware available for all major car manufacturers.
- Lock-down hardware is interchangeable with our non-vented 20-inch cover.
- Saves time, labor, and reduces accidents; no workers are required on the roof during unloading.



PRODUCT SPECIFICATIONS

Pressure Rating	250 psi Max
Operating Temperature	-50°F to 200°F Max
Dimensions	20-Inch
Weight	18.1 lbs
Cover Material	UV Stabilized High-Density Polyethylene (HDPE)
Gasket Material	White FDA TPV
Arm Material	Stainless Steel
Latch Material	Stainless Steel