

# STUCKI SOLUTIONS

## GATOR® OUTLET GATES

### TOUGHNESS MEETS EFFICIENCY

- Leak Proof - Reinforced Bolting Flange
- Low Operating Torque
- No Pinion Skipping
- Rolled Flange Construction
- Smooth, Continuous Flow Hopper Surfaces
- Low Wear, High Strength Capstan

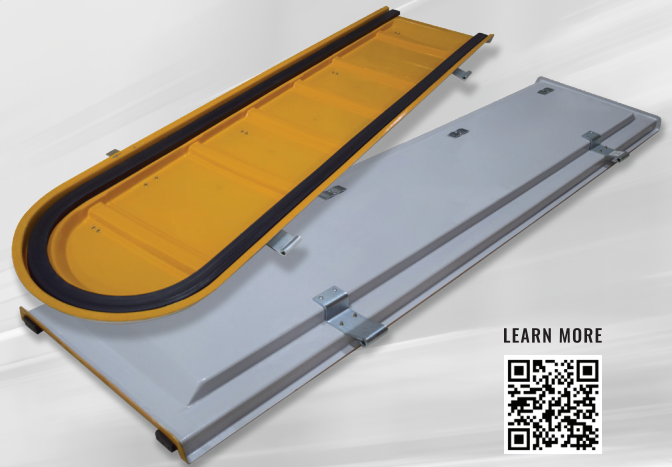
LEARN MORE



## TROUGH HATCH COVER

### DEPENDABLE SEAL & OPTIMAL PROTECTION

- Rust-Resistant Hardware
- Smooth and sealed coating
- Strong and durable
- Meets AAR requirements
- Interchangeable with current fiberglass market design



LEARN MORE



## 30" COMPOSITE HATCH COVER

### LIGHTWEIGHT & EXCEPTIONAL DURABILITY

- Constructed from composite material
- Material offers excellent impact strength
- Dual hinge design with integrated locking latch tab
- Cost-effective design
- Lightweight and long-lasting materials
- Single piece design

LEARN MORE

