

TRUCK BOTTOM RODS



FREIGHT CAR



Straight Truck Bottom Rod

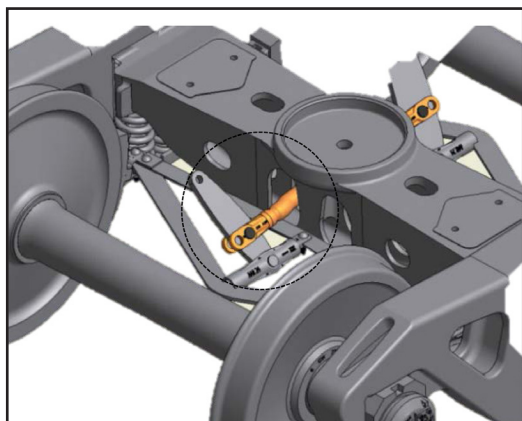


Single Offset Truck Bottom Rod



Double Offset Truck Bottom Rod

U.S. PATENT: 8,640,834



Location on Truck



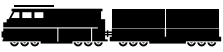
Standard Package
 70 pieces per pallet

FEATURES & BENEFITS

- Weld-free assembly with visual installation TOP indicator
- Fatigue & wear resistant
- Design allows for a wide lever angularity to facilitate brake shoe replacement
- Offset heights according to customer specific requirements
- Wide range of models available both in lengths and pinhole diameters
- Effective traceability
- Immediate delivery!

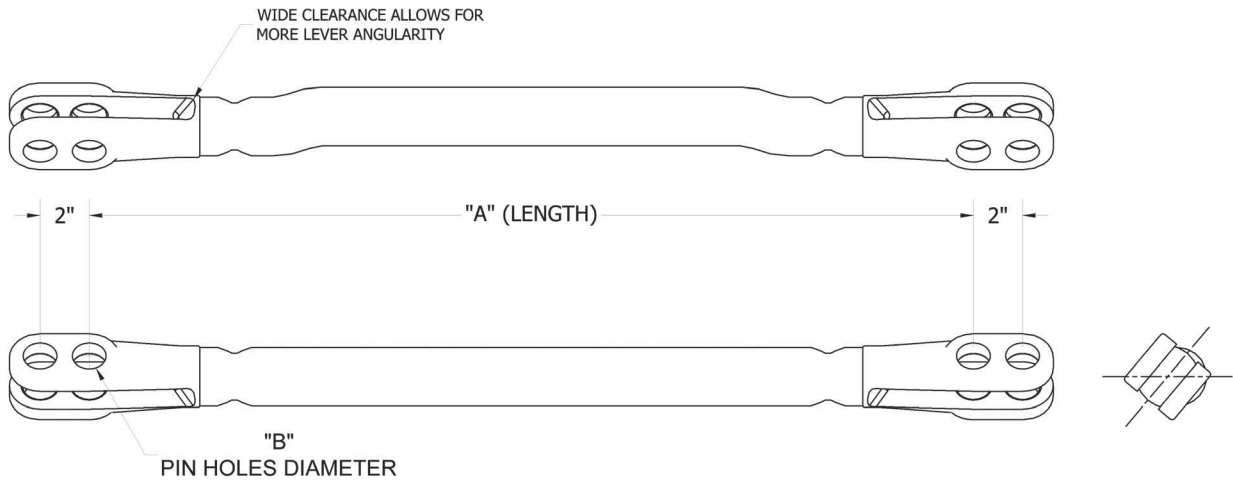
INNOVATIVE DESIGN, SUPERIOR PERFORMANCE

Take control of your railcars with straight, single or double offset Truck Bottom Rods from A. Stucki Company. The superior evolution of an industry staple offers renowned peace of mind for your valuable investments. In addition, it features extended life and durability, making it a cost-effective, long term solution when you need it most.



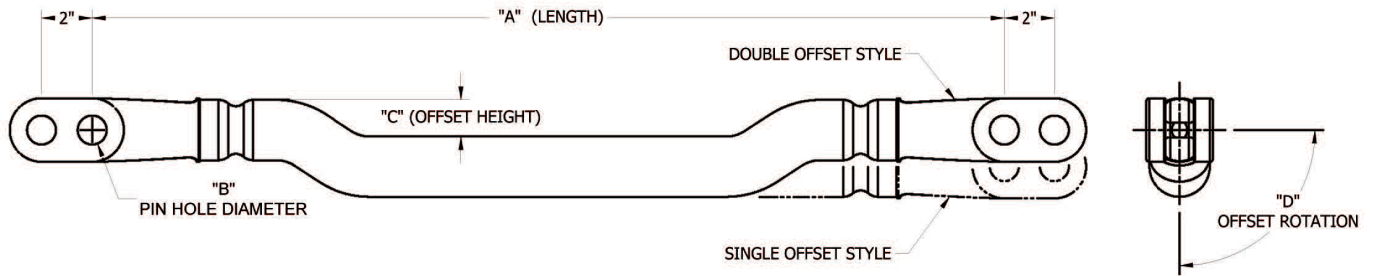
TECHNICAL SPECIFICATIONS:

SELECTION CHART



Straight Truck Bottom Rod	
Length "A"	Pin Holes Diam. "B"
33" to 39"	1 1/8"
	1 1/4"
	1 3/8"

*Lengths and pin holes other than shown are available upon request. Delivery time will depend on production planning.



Single & Double Offset - Truck Bottom Rods					
Length "A"	Pin Hole Diam. "B"	Offset Height "C"	Offset rotation "D"	Offset style	
33" a 39"	1 1/8"	1.188"	Any angle	*Single *Double	
		1.440"			
		1.656"			
	1 1/4"	1.188"			
		1.440"			
		1.656"			
	1 3/8"	1 3/8"			1.188"
					1.440"
					1.656"

Offsets, pin holes & lengths other than shown are available upon request. Delivery time will depend on production planning.

