



## Innovative Design and Superior Performance

A. Stucki Company's complete line of Resilient Friction Elements (RFE) provide you with the options that you need to keep your fleet running longer. Our innovative designs provide superior performance that lowers your overall maintenance costs. We also support a broad range of truck models to meet your needs.

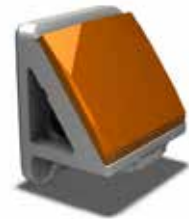
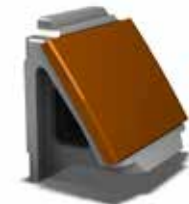
All our models of resilient friction elements are easy to install. There is no truck modification needed either for retrofit or new car applications. Using Stucki RFEs will enable you to maintain snubbing forces more consistently for proper control of car dynamics. We offer wedge and pad assemblies for retrofit or complete packages for new car applications.

### Features

- Virtually eliminates bolster pocket wear
- Saves the cost of rebuilding pockets and replacing wedges
- Maintains snubbing forces more effectively
- AAR approved
- All control springs and column guide wear plates available

### Technical

- RFE-16 (70 and 100 ton Barber® trucks)
- RFE-18 (70, 100 and 125 ton Ride Control® trucks)
- RFE-26 (100 ton Super Service Ride-Control® trucks)
- RFE-41 (100 ton Barber® S-2-HD trucks)
- RFE-51 (100 ton Barber® S-2-D trucks)
- RFE-53 (100 ton Super Service Ridemaster® trucks)

**RFE-16****RFE-18****RFE-26****RFE-41****RFE-51****RFE-53**